

# DELL™ LATITUDE™ XT TABLET

With the Dell Latitude XT tablet, nothing is lost between what you think and what you write. Groundbreaking touch technology lets you write naturally, and the tablet moves easily with you wherever you go. Purely and simply, the XT is an extension of you.

## THE MOST USEABLE TECHNOLOGY AT HAND

No more keeping your palm off the tablet surface. No more forcing your hand into awkward positions or pressing down for touch recognition. The Dell Latitude XT solves the problems of other tablets, making it effortless to use — simply pick up the pen and write as you would on a piece of paper.

## INCREDIBLE PERFORMANCE AND ACCURACY

The new Latitude XT offers fast response time and consistent feel. Its high-performance capacitive touch is built for accuracy and speed. Drag and drop, scroll, flick, and select with ease as you move seamlessly between touch and pen.

Low-pressure touch helps eliminate accidental drops or skips, and high touch accuracy lets you easily work with even the smallest icons. Advanced palm-rejection technology prevents interference if you accidentally touch the screen.


The pen is light, comfortable to use, maintenance-free, and comes with several tips for precise and personalized writing. And the screen is always easy to see thanks to a high-brightness, outdoor-viewable panel.

## GROUNDBREAKING DUAL-MODE PEN AND TOUCH TECHNOLOGY

- Dual-mode solution provides excellent palm rejection: write naturally without inadvertent contact getting in your way
- Single sensor module: single-host cable connects the digitizer to the computer for better overall experience and system reliability
- 1,000 dpi resolution and 133 PPS allows for high touch accuracy even while wearing latex gloves
- Subpixel resolution enables full utilization of OS and application functionality
- Sense on contact—no pressure required
- Consistently smooth scrolling, dragging, flicks, and gestures

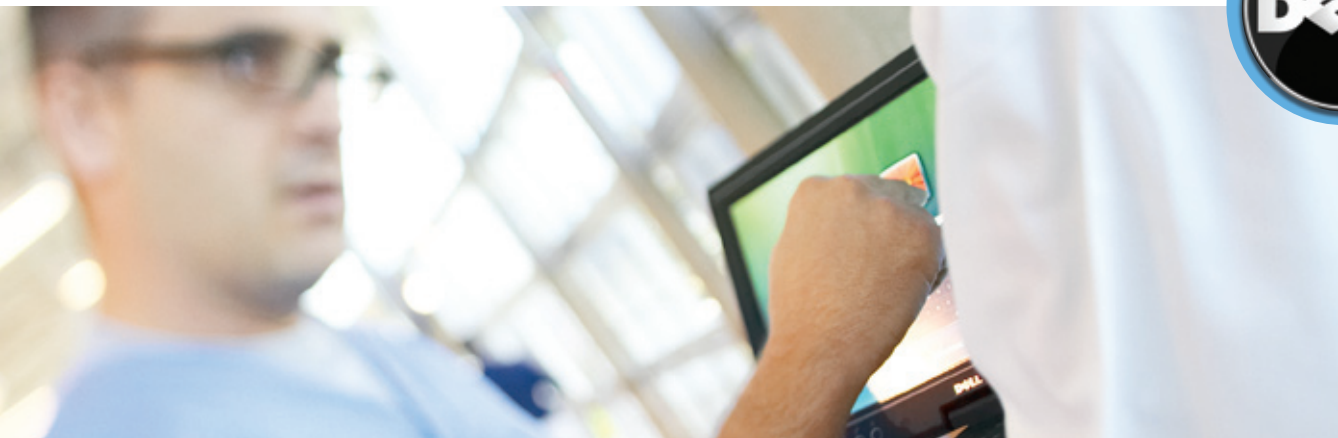
## PANELS THAT DELIVER VISIBILITY AND PORTABILITY

Two screens offer the ultimate in energy efficiency, usability, and flexibility:

- 12.1-inch WXGA CCFL LCD. Features a daylight-viewable display which eliminates glare. Built to use outdoors or under direct light. Easy to see—even in bright sunlight. 
- 12.1-inch WXGA LED-backlit LCD. This thin, lightweight panel offers optimum portability and the kind of bright-screen visibility you'd expect from a heavy panel.

## THIN AND LIGHT

The Latitude XT can go anywhere with you because it's a thin, light, 12.1-inch convertible tablet. Only one inch thin, the XT easily slips into its unique tablet case which is available with options like a "bump" sleeve that lets you use the tablet without taking it out. Its power supply is ultra-small, and its optional slim, high-capacity battery slice is expected to last up to 9.5 hours.



## SIMPLE TO MANAGE

The Latitude XT is loaded with the tools you need, and since it's part of the Latitude family of notebooks, it's easy to buy, deploy, and manage. The XT is equipped with optional solid-state drives designed to deliver 5x increased reliability and up to 23% improved system performance over standard hard drives. A standard integrated biometrics reader, TPM 1.2, and an optional smart card reader enhance security. And the XT is optimized for graphics. With Windows Vista™ Business and Vista™ Ultimate, this 12.1-inch tablet is designed to deliver an optimal visual experience, including the advantages of Vista Aero-Glass.

- Fully integrated communications, with WWAN (HSDPA revA, EVDO rev3.6), WLAN (802.11 Draft n/MIMO3x3), and Bluetooth® 2.0
- Optional media base for docking and integrated optical computing
- Work in notebook mode with full-size keyboard and dual pointing

Add 24/7 telephone support from Dell Services to maximize uptime and boost productivity, and your on-the-go computing experience is simplified even more.

FEATURES	DELL™ LATITUDE™ XT TABLET
<b>Processor Performance</b>	Single Core: 533 MHz FSB with 2.0 MB of level 2 smart cache - Intel® Core™ 2 Solo ULV processor U2100 (1.06GHz) Dual Core: 533 MHz FSB with 2.0 MB of level 2 smart cache - Intel® Core™ 2 Duo ULV processor U7600 (1.20GHz)
<b>Display</b>	12.1-inch WXGA (1280 x 800 resolution), LED-back-lit display 12.1-inch WXGA (1280 x 800 resolution), Outdoor Viewing display, up to 400 nits
<b>Graphics<sup>1</sup></b>	ATI Radeon X1250 UMA Graphics (integrated)
<b>Memory<sup>1</sup></b>	1GB (1x1GB on board) 533MHz 2GB (1x1GB on board, 1x1GB DIMM) 533MHz 3GB (1x1GB on board, 1x2GB DIMM) 533MHz
<b>Power/Battery</b>	4-cell 28W/Hr Li-Ion primary or secondary 6-cell 42W/Hr Li-Ion primary or secondary 45W/Hr Li-Ion High Capacity Battery Slice 45W (small form factor), 65W, Combo Auto/Air (90W test only) 3-foot power cord standard, 6-foot optional
<b>Hard Drives<sup>1</sup></b>	40GB/80GB 1.8" 4200 RPM HDD 120GB 1.8" 5400 RPM HDD 32GB/64GB SSD
<b>Input Devices</b>	Finger Touch – Capacitive Touch Screen Pen – EM Digitizer <ul style="list-style-type: none"> <li>• Eraser functionality actuated via side switch</li> <li>• Optional tether</li> <li>• Interaction with display controlled by three different replaceable "tips" for user-selectable writing experiences</li> </ul> Full-size keyboard / full Latitude localization Dual-pointing; rubber domes with leveling rods Scroll Wheel with enter and back functionality (on display / slate)
<b>Operating Systems</b>	Windows Vista™ Business (32-bit, 64-bit); Windows Vista™ Ultimate (32-bit); Windows XP Tablet Edition 2005; N-Series
<b>Connectivity Options</b>	Dell Wireless 1390 (802.11g) Dell Wireless 1490 (802.11a/g) Dell Wireless 360 Bluetooth Module Dell Verizon Wireless 5720 Mobile Broadband <sup>1</sup> (EV-DO Rev A) Dell Wireless 5720 Sprint Mobile Broadband <sup>1</sup> (EV-DO Rev A) Dell Wireless 5720 Telus Mobile Broadband <sup>1</sup> (EV-DO) Gigabit Ethernet (10/100/1000)
<b>Carrying Cases</b>	D-series small nylon case D-series small leather case D-series nylon backpack XT leather slipcover XT bump case

<sup>1</sup>Graphics and System Memory: Significant system memory may be allocated to support graphics, depending on system memory size and other factors.

